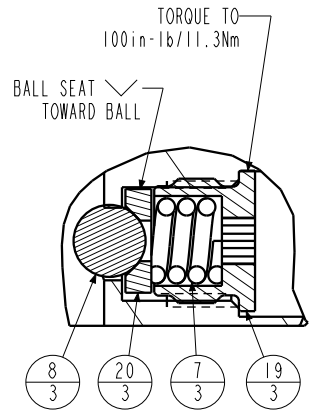


FACE LIPS TO BOTTOM OF CLAMP

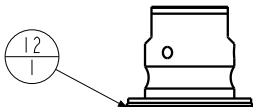
BODY, NOT REPLACEABLE

APPLY LUBRICANT TO ALL SEALS PRIOR TO INSTALLATION. DO NOT USE SILICONE TYPE LUBRICANTS. FOR PROPER ARM MOUNTING SEE IS1505.



TORQUE TO 100 in-lb/11.3Nm

DETAIL A SCALE 1.500



FOR REPLACEMENT PLUNGER AND POSITION ROD ASSEMBLY ORDER 62140125 KIT, SC, LP, TC, BF, PLUNGER & PR, 7500/33KN

SEE DETAIL A

APPLY MEDIUM STRENGTH THREAD LOCKER. TORQUE TO 100 in-lb/11.3Nm

FACE CONCAVE TO O-RING

FACE LIPS TO TOP OF CLAMP

TORQUE TO 23 ft-lb/31 Nm

TORQUE TO 11 in-lb/1.2 Nm

APPLY ANTI-SEIZE TO THREADS. TORQUE TO 30 ft-lb/40.7 Nm

APPLY LOW STRENGTH THREAD LOCKER. TORQUE TO 11 in-lb/1.2 Nm

APPLY LOW STRENGTH THREAD LOCKER. TIGHTEN SCREW AGAINST MAGNET TO PREVENT ANY MAGNET MOVEMENT. CAUTION: DO NOT CRACK MAGNET.

APPLY LOW STRENGTH THREAD LOCKER. TORQUE TO 11 in-lb/1.2 Nm

| No. | QTY | PART No. | DESCRIPTION | Std. Seal Kit | FKM Seal Kit |
|-----|-----|----------|-------------------------------------|---------------|--------------|
| N/A | N/A | IS1505 | INSTRUCTION SHEET, ARM INSTALLATION | | |
| N/A | N/A | 6V711050 | SEAL KIT, FKM | | |
| N/A | N/A | 60711050 | SEAL KIT, STANDARD | | |
| 26 | 1 | 39V11051 | WIPER, PRESS-IN, (1-1/2) | X | X |
| 25 | 1 | 39V10029 | WIPER, PRESS-IN, (1/4) | X | X |
| 24 | 1 | 39H51002 | O-RING, (-033) | X | 39V51002 |
| 23 | 1 | 91100001 | MAGNET, .130 x .312, PS | | |
| 22 | 1 | 81592131 | CAM, SC, LP, 7500/33KN, RH, TC, PR | | |
| 21 | 1 | 81542112 | BASE, SC, BF, LP, 33KN, PR | | |
| 20 | 3 | 81532108 | SEAT, BALL, SC, LP, TC | | |
| 19 | 3 | 81532107 | RETAINER, SC, LP, TC | | |
| 18 | 1 | 81500061 | HOUSING, PS, MAG, SC, LP | | |
| 17 | 1 | 81500060 | ADAPTOR, PS, MAG, SC, LP | | |
| 16 | 2 | 43068006 | PLUG, 1/4 BSPF MALE | | |
| 15 | 1 | 39054017 | BU RING, (-033) | X | 39054023 |
| 14 | 1 | 39054016 | BU RING, (1.5x.125x.063) | X | X |
| 13 | 1 | 39052043 | SEAL, LL, (1/4 X 1/8 X 1/8 X 1/2) | X | 39V52043 |
| 12 | 1 | 39052030 | SEAL, CROWN, 1-3/4x2-1/8x1/4 | X | 39V52030 |
| 11 | 2 | 39051041 | O-RING, (-006) | X | 39V51041 |
| 10 | 2 | 39050042 | O-RING, (-011) | X | 39051025 |
| 9 | 1 | 39011075 | SEAL, LL, (1-1/2 X 1/8 X 1/8 1-3/4) | X | 39V11075 |
| 8 | 3 | 23650004 | BALL, TUNGSTEN-CARBIDE. 250 | | |
| 7 | 3 | 23350066 | SPRING, COMPRESSION | | |
| 6 | 10 | 21500305 | SHCS, M8 X 1.25-6G X 30MM | | |
| 5 | 2 | 21500200 | WASHER | | |
| 4 | 1 | 21500044 | SCREW, CAP, BTNH, M3-0.5 X 6, SSTL | | |
| 3 | 3 | 21500043 | SHCS, M3-0.5 X 6 ALY | | |
| 2 | 3 | 21500031 | SHCS, M5 X 0.8 X 14, ALY | | |
| 1 | 2 | 21500019 | SCREW, CAP, BTNH, M3 X 6, ALY | | |

PARTS LIST

ASSEMBLIES AFFECTED
41423321PS
41423321PSF

VEKTEK, INC.
1334 E. SIXTH AVE. P.O. BOX 625
EMPORIA, KS. 66801 U.S.A.

SIZE A MPL7230

REV C

| | | | | |
|---------|------------------------|--|------------|----------|
| C | 5762 | RELEASE | JDW | 07/18/25 |
| REV | IN ACCORDANCE WITH ECN | EFFECTIVE DATE | REVISED BY | DATE |
| DRW BY: | JDW | DRAWING STATUS: Released | | |
| DATE: | 10/16/13 | PRODUCTION APPROVED FOR RELEASED STATUS ONLY | | |

SHEET 1 OF 1

